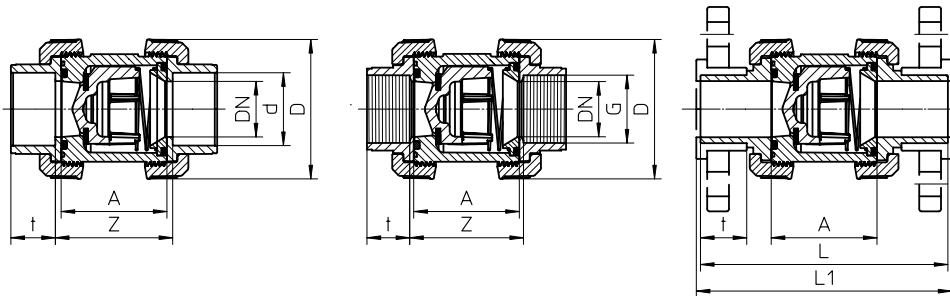


# Cone check Valve S6 PVC-U

Code 52



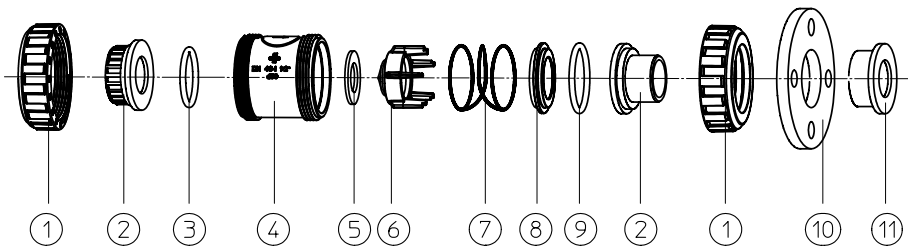
## Technical data



d	DN	G	L	L1	A	Z	t	D	PN
mm	mm	Zoll	mm	mm	mm	mm	mm	mm	bar
40	32	1 1/4"	167,0	173,0	77,0	84,0	26,5	101,5	16
50	40	1 1/2"	176,0	182,0	77,0	87,0	31,5	101,5	16
63	50	2"	202,0	208,0	87,0	99,0	38,5	115,5	16

**Opening pressure: 0,06 bar**

### Exploded drawing



01. Union nut
02. Connections
03. O-Ring
04. Body
05. Flat seal
06. Cone
07. Spring
08. Thrust collar
09. O-Ring
10. Flange
11. Flange adaptor



### General:

- Sealing material: EPDM, FPM
- Body material: **PVC-U**
- Dimensions: DN32/d40 – 11/4" – DN50/d63 – 2"
- Spring material: 1.4401

### Operating pressure:

DN32/d40 - DN50/d63: 16bar

### Connection:

- Solvent cement socket (DIN, ASTM, JIS)
- Solvent cement spigot (DIN)
- Threaded socket (BSP, NPT)
- PE- Fusion socket (ASTM, DIN)
- PE- Fusion Spigot (DIN)
- Flange (DIN, ASTM, ASA, JIS)

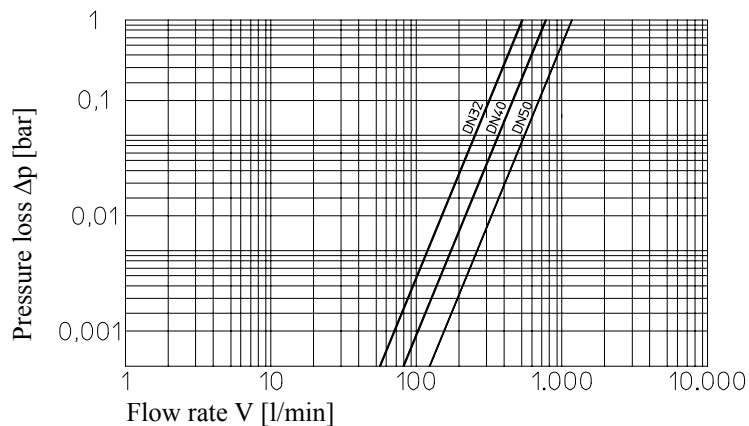
### Features:

- corrosion resistant
- maintenance free operation over a long working live
- Service friendly
- radial installation or removal
- low opening pressure
- low pressure loss
- Body dimensions, Union nut and Connections are the same as S6-Ball valve
- Type with Drain Valve
- Type with transparent body

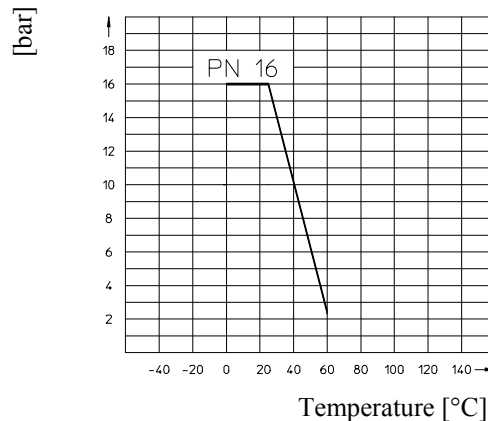
This data sheet contains technical datas only and no guarantee promises can be grated.

Subjects to be technical modifications!

PRESSURE – LOSS - DIAGRAM

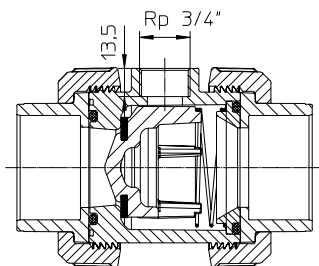


PRESSURE – TEMPERATURE - DIAGRAM



OPTIONAL

Type with internal threads



**Features:**

- Medium drain is possible at closed Check Valve
- 2 different Drain Valves available
- Body of Check Valve with 3/4" internal thread to screw in the Drain Valve
- sampling possible

OPTIONAL

Type with transparent Body



**Features:**

- Operating pressure: DN32/d40 - DN50/d63:16bar
- Body material: PVC-U transparent
- Checking of Open- and Closed position possible
- medium flow in sight

Versions Drain Valve:



Male thread x Male thread  
3/4" x 3/4"



Male thread 3/4" x Hose connection